

### SPECIFICATIONS

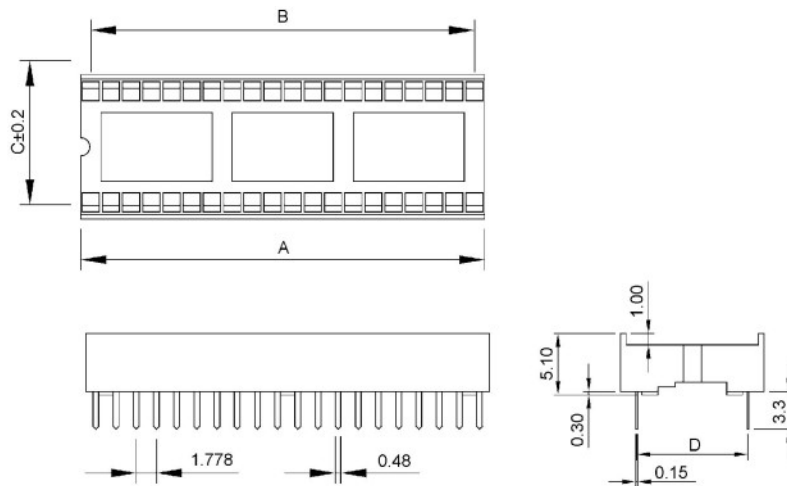
Current Rating: 1 A  
 Insulation Resistance: 5000 M $\Omega$  min.  
 Withstanding Voltage: 500V AC/minute  
 Temperature Range: -55°C ~ +105°C  
 Contact Resistance: 20 m $\Omega$  max.

### MATERIAL

Insulator: PBT, UL 94 V-0  
 Contact: Phosphor bronze  
 Plating: Tin over Nickel

### FEATURES

Size 16 to 64 poles  
 Suitable for 1,57mm thick PCB  
 Enable easy IC insertion  
 Dual beam contact, high reliability connection  
 Packaging Tube

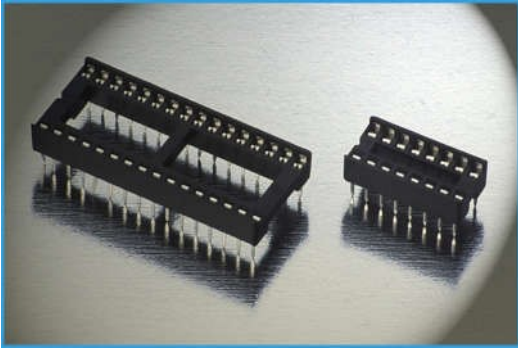


Poles	Part. No.	A (mm)	B (mm)	C (mm)	D(mm)
16	5620820-07	14,22	12,45	10,10	7,62
20	5621020-07	17,78	16,00	10,10	7,62
22	5621120-07	19,56	17,78	10,10	7,62
24	5621220-10	21,34	19,56	12,65	10,16
28	5621420-10	24,89	23,11	12,65	10,16
30	5621520-10	26,67	24,89	12,65	10,16
32	5621620-10	28,54	26,67	12,65	10,16
40	5622020-15	35,56	33,78	17,75	15,24
42	5622120-15	37,34	35,56	17,75	15,24
48	5622220-15	42,67	40,89	17,75	15,24
52	5622620-15	46,23	44,45	17,75	15,24
54	5622720-15	48,01	46,23	17,75	15,24
56	5622820-15	49,78	48,01	17,75	15,24
64	5623220-19	56,90	55,12	28,00	19,05

# MEMORY CARD & SOCKET CONNECTORS

## PCB socket - IC socket p.2,54 mm

C



### SPECIFICATIONS

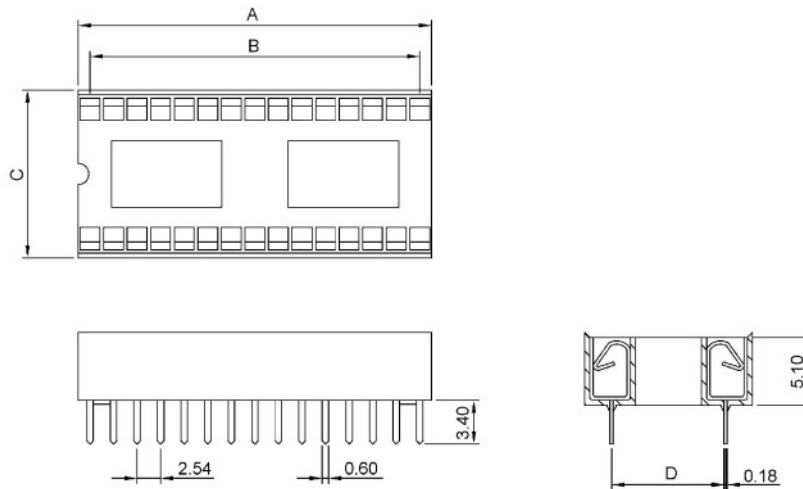
Current Rating: 1 A  
 Insulation Resistance: 1000 MΩ min.  
 Withstanding Voltage: 500V AC/minute  
 Temperature Range: -55°C ~ +105°C  
 Contact Resistance: 20 mΩ max.

### MATERIAL

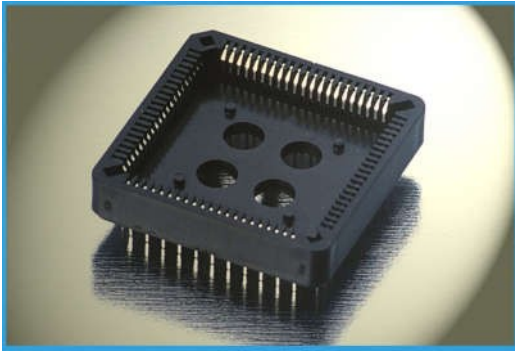
Insulator: PBT, UL 94 V-0  
 Contact: Phosphor bronze  
 Plating: Tin over Nickel

### FEATURES

Size 6 to 64 poles  
 Dual beam stamped contact  
 Suitable for 1.57mm thick PCB  
 Packaging Tube



Poles	Part. No.	A (mm)	B (mm)	C (mm)	D(mm)
6	5620320	7.62	5.08	10.00	7.62
8	5620420	10.16	7.62	10.00	7.62
14	5620720	17.78	15.24	10.00	7.62
16	5620820	20.32	17.78	10.00	7.62
18	5620920	22.86	20.32	10.00	7.62
20	5621020	25.40	22.86	10.00	7.62
22	5621120	27.94	25.40	10.00	7.62
24	5621220-7	30.48	27.94	10.00	7.62
28	5621420-7	35.56	33.02	10.00	7.62
32	5621620-7	40.64	38.10	10.00	7.62
24	5621220	30.48	27.94	17.75	15.24
28	5621420	35.56	33.02	17.75	15.24
32	5621620	40.64	38.10	17.75	15.24
34	5621720	43.18	40.64	17.75	15.24
40	5622020	50.80	48.26	17.75	15.24
48	5622420	60.96	58.42	17.75	15.24
64	5623220	81.30	79.76	26.00	23.00



### SPECIFICATIONS

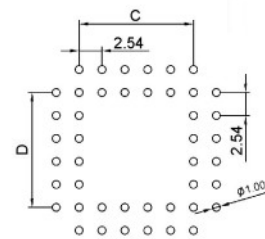
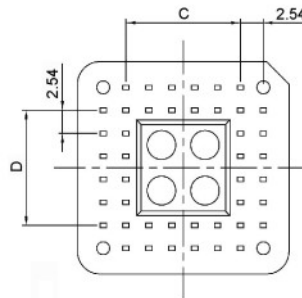
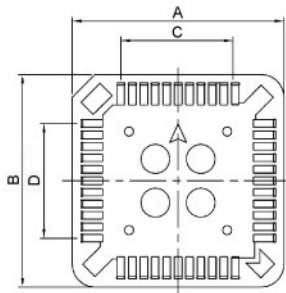
Current Rating: 1 A  
 Insulation Resistance: 1000 MΩ min.  
 Withstanding Voltage: 500V AC/minute  
 Temperature Range: -55°C ~ +105°C  
 Contact Resistance: 30 mΩ max.

### MATERIAL

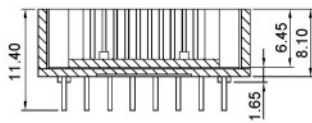
Insulator: G.F. PBT or PPS, UL94V-0  
 Contact: Phosphor bronze  
 Plating: Tin over nickel

### FEATURES

Size 20 to 84 poles  
 Accept JEDEC Type A square chips.  
 Suitable for 1.57mm thick PCB  
 Packaging Tube



Recommended PCB Layout

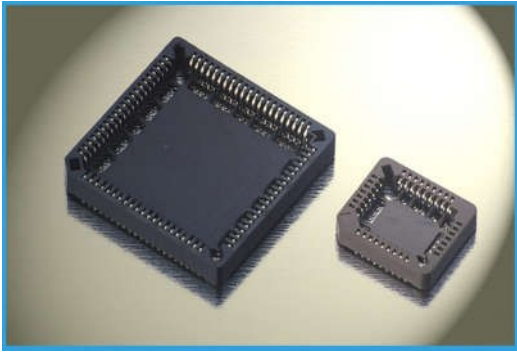


Poles	P/N. PBT	P/N. PPS	A (mm)	B(mm)	C (mm)	D(mm)
20	PLCC-20-T'-B	PLCC-20-T1-P	15,50	15,50	5,06	5,06
28	PLCC-28-T'-B	PLCC-28-T1-P	18,00	18,00	7,62	7,62
32	PLCC-32-T'-B	PLCC-32-T1-P	18,00	25,56	7,62	10,16
44	PLCC-44-T'-B	PLCC-44-T1-P	23,58	23,58	12,70	12,70
52	PLCC-52-T'-B	PLCC-52-T1-P	25,90	25,90	15,24	15,24
68	PLCC-68-T'-B	PLCC-68-T1-P	31,80	31,80	20,32	20,32
68	---	PLCC-68-T1-P	31,10	31,10	20,32	20,32
84	PLCC-84-T'-B	PLCC-84-T1-P	36,70	36,70	25,40	25,40
84	---	PLCC-84-T1-P	36,00	36,00	25,40	25,40

# MEMORY CARD & SOCKET CONNECTORS

## PCB socket - PLCC socket SMT

C



### SPECIFICATIONS

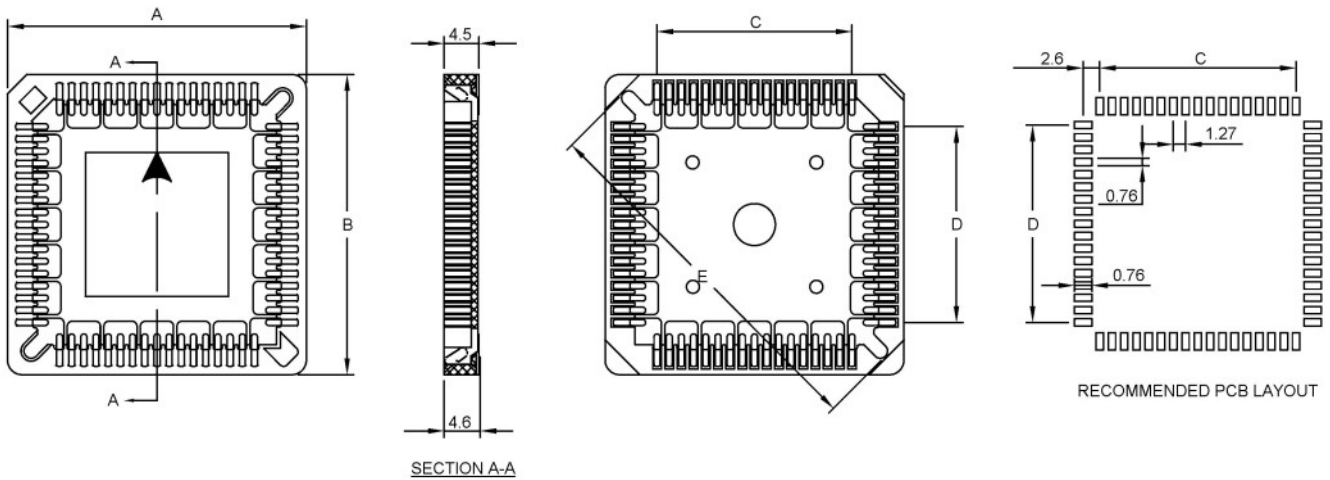
Current Rating: 1 A  
 Insulation Resistance: 1000 MΩ min.  
 Withstanding Voltage: 500V AC/minute  
 Temperature Range: -55°C ~ +105°C  
 Contact Resistance: 30 mΩ max.

### FEATURES

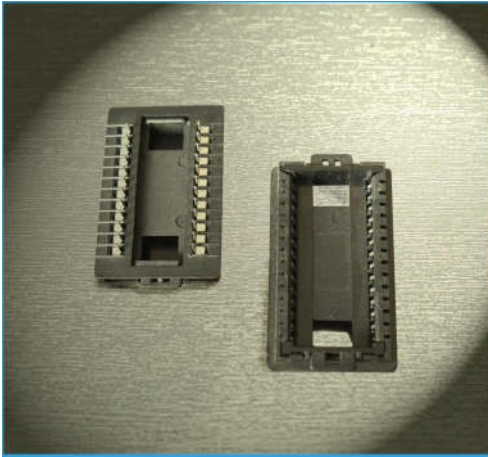
Size 20 to 84 poles  
 Accept JEDEC Type A square chips.  
 Packaging Tube or Tape & reel

### MATERIAL

Insulator: G.F. PPS, UL 94V-0  
 Contact: Phosphor bronze  
 Plating: Tin over Nickel



Poles	Part. No.	A (mm)	B (mm)	C (mm)	D(mm)	E(mm)
20	PD412021	15,66	15,66	5,08	5,08	17,28
28	PD412821	18,20	18,20	7,62	7,62	20,87
32	PD413221	18,20	23,74	7,62	10,16	22,20
44	PD414421	23,28	23,28	12,70	12,70	27,80
52	PD415221	25,28	25,28	15,24	15,24	31,65
68	PD416821	30,90	33,90	20,32	20,32	38,75
84	PD418421	35,98	35,98	25,40	25,40	46,00



### SPECIFICATIONS

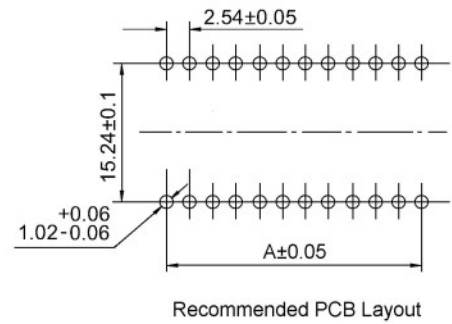
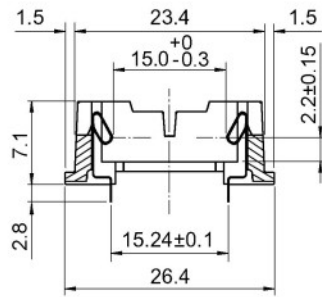
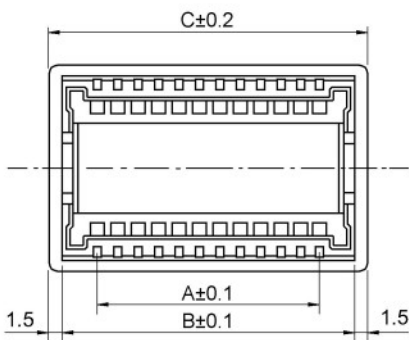
Current Rating: 1 A  
 Voltage Rating: 250V AC,DC  
 Withstanding Voltage: 750V AC/1min.  
 Insulation Resistance: 1000 MΩ min.  
 Temperature Range: -40°C ~ +125°C  
 Contact Resistance: 20 mΩ max.

### FEATURES

Sizes 24/28 poles  
 Packaging tray  
 Suitable for 1.57mm thick PCB

### MATERIAL

Insulator: G.F. PBT UL94V-0, black color  
 Contact: Phosphor bronze  
 Plating: gold or tin over nickel



Poles	Part. No.	A (mm)	B (mm)	C (mm)
24	5135-2420S	27.94	37.00	40.00
28	5135-2820S	33.02	42.08	45.08